

HOLA LAKE II Holistic Approach in Lake Restoration

Lake Köyliönjärvi and River Yläneenjoki

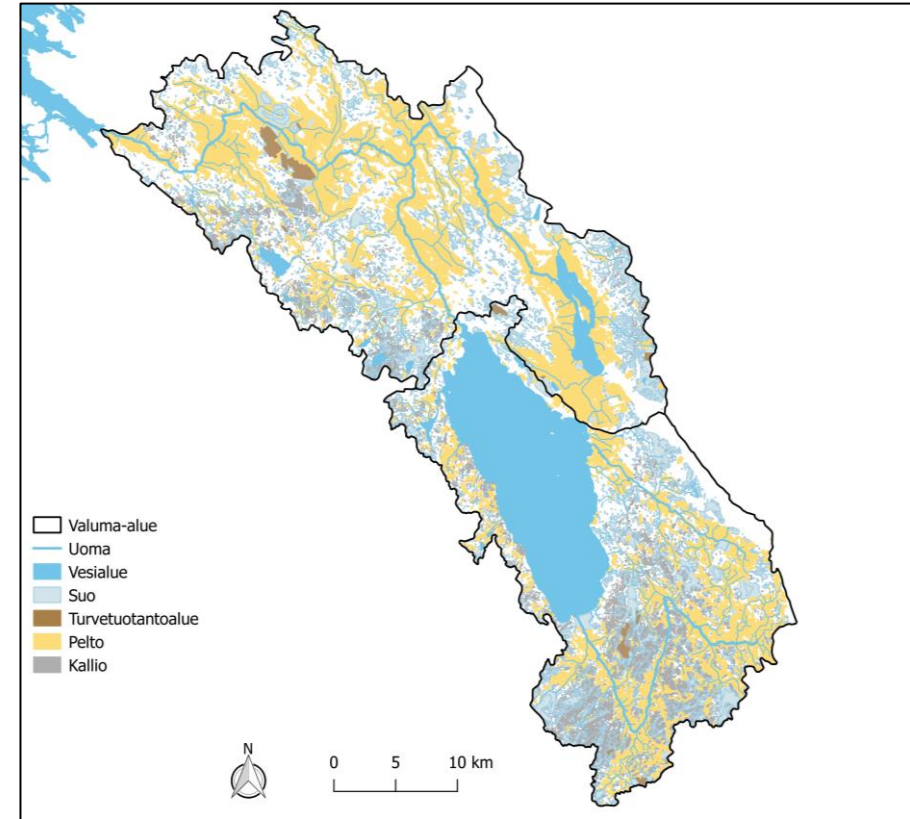
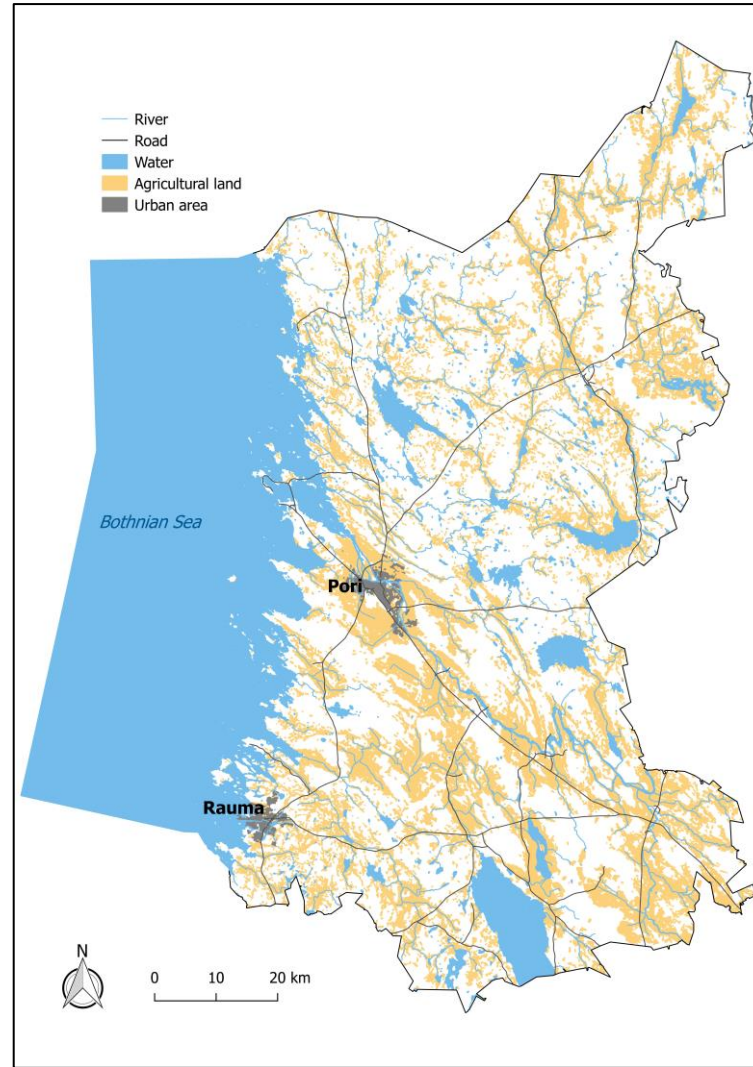
Pyhäjärvi Institute

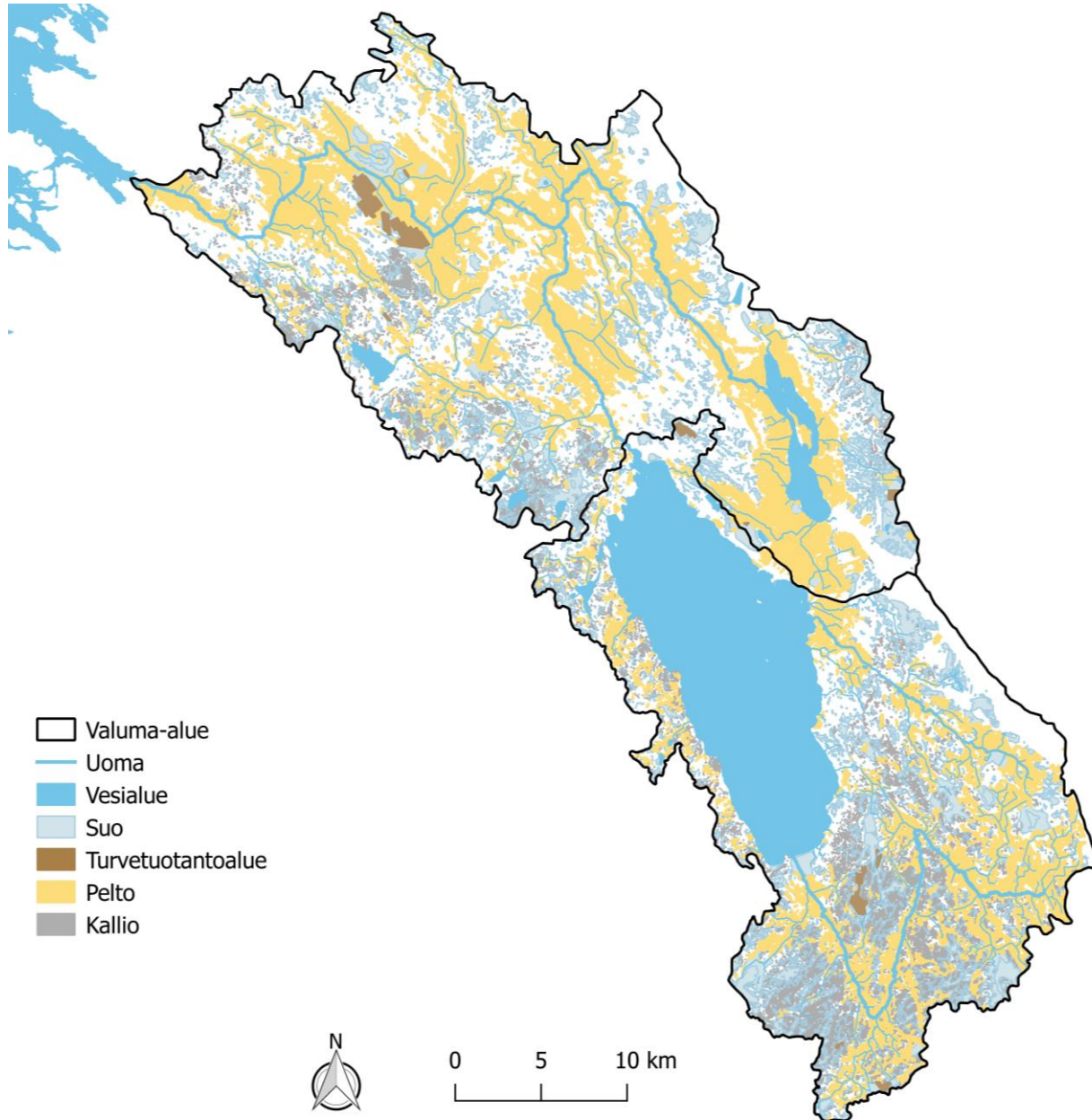
Henna Ryömä



Hola Lake in Pyhäjärvi Institute

- ▶ Project time: 1.1.2022-31.12.2023
- ▶ LAGs
 - ▶ Leader **Pyhäjärvisoutu** Satasilta ry, Lake Köyliönjärvi
 - ▶ Leader Varsinais-Suomen Jokivarsikumppanit ry, River Yläneenjoki
- ▶ Budget in Lake Köyliönjärvi: 48 618€, funding 38 890€ Leader Satasilta ry
- ▶ Budget in River Yläneenjoki: 29 903€, funding 23 922€ Leader Jokivarsikumppanit ry





- **Lake Köyliönjärvi** is a lake of 12,5 square kilometers and located in the municipality of Säköylä in Satakunta region. Its average depth is 3 meters. Lake Köyliönjärvi has been classified as the poor ecological category. It is rich in nutrients. The biggest problems with the lake are the high external and internal nutrient loadings and eutrophication. Lake Köyliönjärvi drains to River Eurajoki.
- **River Yläneenjoki** stretches over the municipalities of Pöytyä, Oripää, Loimaa and Säköylä. Length of the river Yläneenjoki is 38 kilometers. It has its origin in village Latva in Oripää municipality and it runs through village Yläne into Lake Pyhäjärvi of Säköylä. Surface area of the drainage area is 234 square kilometres.

HOLA LAKE II Köyliönjärvi

Targets and themes

1. Reduction of external loading,
 2. Fish management and commercial use of management fish catch,
 3. Management and use of reeds
 4. Control of invase species
- ▶ Local activities in target area
- ▶ Vegetation mapping
 - ▶ **Work has been started**
 - ▶ Compiling general plan for vegetation management based on mapping
 - ▶ **Work has been started**
 - ▶ Testing solutions and practices for harvesting reed and excess aquatic plants to restore flow conditions in littoral zone (1-3 pilots)
 - ▶ **First pilot, winter cutting 18.3.2023 -> story in local paper**
 - ▶ Intstructional evening, discussion events on identifying Reed sweetgrass, management solutions and social capacity building
 - ▶ **Summer 2023**
 - ▶ Survey on distribution of aggressive invase species Reed sweetgrass (*Glyceria maxima*) in Lake Köyliönjärvi area, mainly River Köyliönjoki
 - ▶ **Summer 2023**
 - ▶ International cooperation and networking for finding and sharing best practices and knowhow

Pyhäjärvi-instituutti
Puhdas vesi, paremmat eväät

LEADER

Pyhäjärviseuutu



Euroopan maaseudun
kehittämisen maatalousrahasto:
Eurooppa investoi maaseutualueisiin



Elinkeino-, liikenne- ja
ympäristökeskus











HOLA LAKE II Yläneenjoki

Targets and themes

1. Reduction of external loading,
 2. Fish management and commercial use of management fish catch,
 3. Management and use of reeds
 4. Control of invase species
- ▶ Local activities in target area
- ▶ Survey on distribution of aggressive invasive species Reed sweetgrass (*Glyceria maxima*) in the River Yläneenjoki area in Southwest Finland
 - ▶ **Work has been started in summer 2022 -> continues in 2023**
 - ▶ Testing easily implementable solutions and practices for reducing and preventing spreading of Reed sweetgrass
 - ▶ **Pilot area will be defined during May/June 2023**
 - ▶ Compiling guidance package for removing, collecting and handling of reed sweetgrass based on earlier projects and experiences
 - ▶ **Work has started**
 - ▶ Instructional evening discussion events on identifying Reed sweetgrass, management solutions and social capacity building
 - ▶ **24.5.2023**
 - ▶ International cooperation and networking for finding and sharing best practices and knowhow









